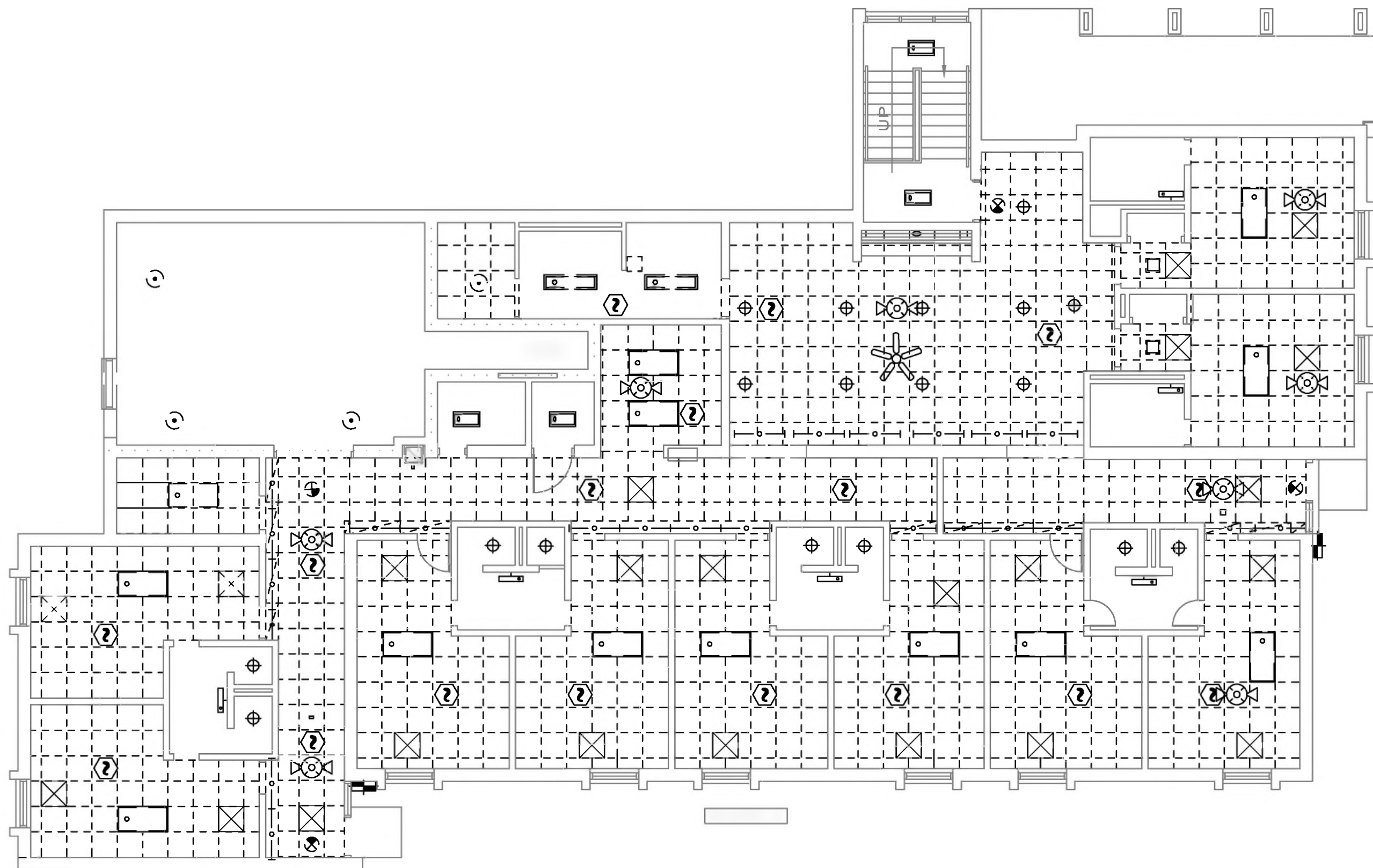
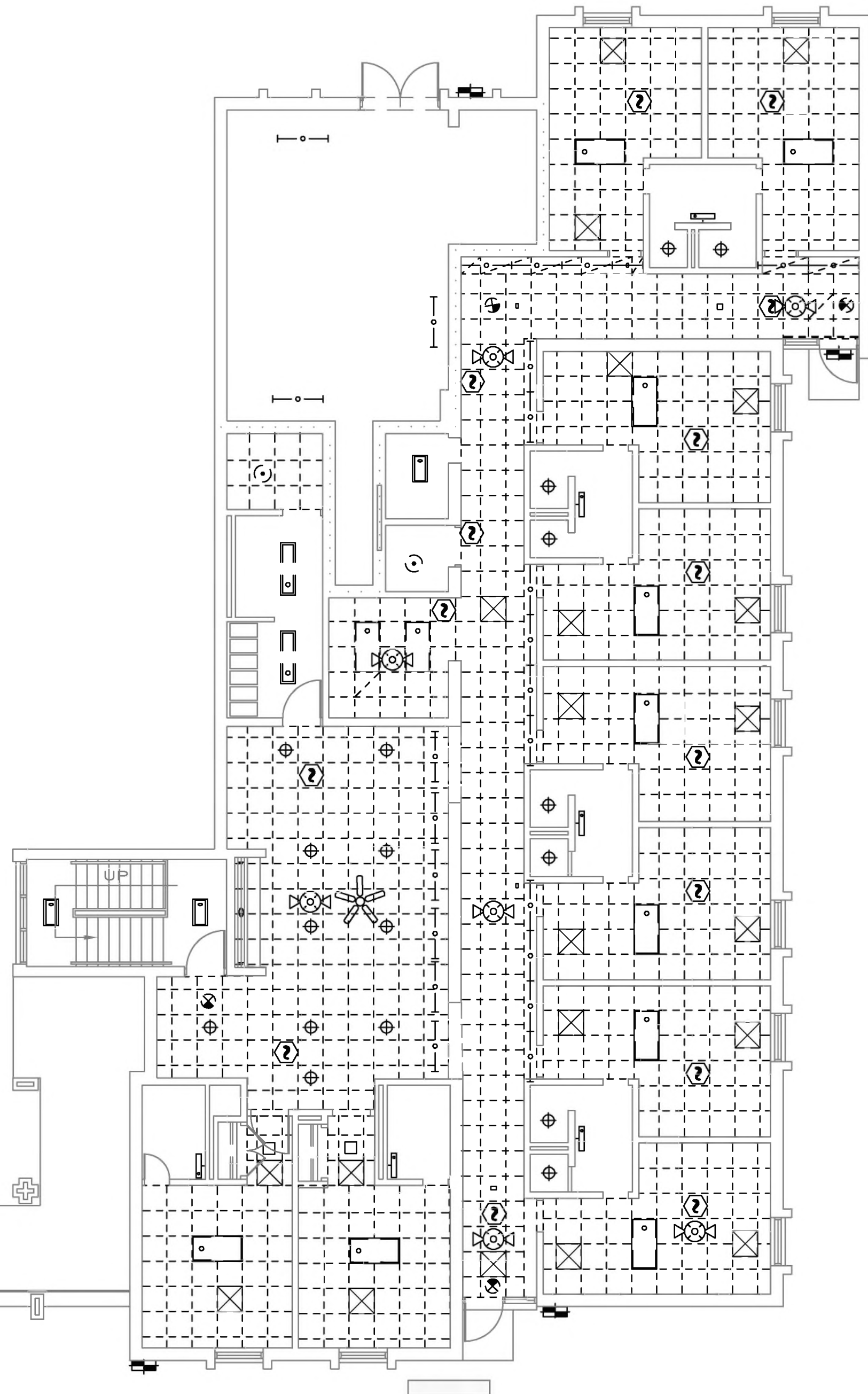


REFLECTED CEILING LEGEND

|  |  |
|--|--|
|  | PLATE TO BE IDENTIFIED                               |
|  | OVERHEAD LIGHT                                       |
|  | RECESSED CAN REMAINING IN RESTROOMS                  |
|  | 24" X 48" FLOURECENT                                 |
|  | 12" X 48" FLOURESCENT                                |
|  | WALL MOUNTED FLOURESCENT AT VANITY                   |
|  | 12" X 48" CEILING MOUNTED FLOURESCENT                |
|  | CEILING MOUNTED FLOURESCENT                          |
|  | CEILING MOUNTED BOX                                  |
|  | CEILING MOUNTED LIGHT                                |
|  | 24" X 24" MECH. RETURN AIR GRILLES - REFER TO MECH   |
|  | FIRE ALARM   |
|  | SMOKE DETECTOR                                       |
|  | WIFI ROUTER  |
|  | CEILING MOUNTED EXIT SIGN                            |
|  | CEILING FAN  |
|  | WALL MOUNTED EMERGENCY LIGHT                         |
|  | AIR VENT   |
|  | 24" X 24" ACOUSTICAL CEILING SYSTEM TO BE DEMOLISHED |
|  | 5/8" GYPSUM BOARD CEILING                            |



1 BUILDING A1 - REFLECTIVE CEILING DEMO PLAN  
AD-100 SCALE: 1/8" = 1'=0"



2 BUILDING B1 - REFLECTIVE CEILING DEMO PLAN  
AD-100 SCALE: 1/8" = 1'=0"



CEILING DEMOLITION NOTES:

1. REMOVE EXISTING GRID SYSTEM TO INCLUDE ALL ASSOCIATED GRIDS, SUPPORTS, WIRE TIES, ETC. REFER TO NEW WORK RCP SHEETS FOR CEILINGS SCHEDULED TO REMAIN.
2. REMOVE EXISTING LIGHTING FIXTURES ON CEILINGS IN RESTROOMS AND WALL MOUNTED FIXTURES ABOVE LAVATORIES.

| REVISIONS |  |  |  |  |  |
|-----------|--|--|--|--|--|
|           |  |  |  |  |  |
|           |  |  |  |  |  |
|           |  |  |  |  |  |
|           |  |  |  |  |  |

ATLANTEC  
ENGINEERS, PA

3221 BLUE RIDGE ROAD SUITE 113  
RALEIGH, NORTH CAROLINA 27612  
(919) 571-1111

R  
RAYMOND

316 WEST MILLBROOK ROAD, SUITE 201  
RALEIGH, NORTH CAROLINA 27612  
WWW.RAYMOND.GLOBAL  
LICENSE #53143 COA# C4282

PREPARED FOR:  
NC DEPARTMENT  
OF INSTRUCTION  
SCO #  
24-27792-01A

GOVERNOR MOREHEAD SCHOOL  
SPRINKLER, ADA TOILET, LIGHTING  
UPGRADES FOR DORMS A, B, & D  
RALEIGH, NC

CONTENTS:  
REFLECTIVE  
CEILING DEMO  
PLAN - 1ST FLS.  
BDGS A & B

DATE:  
05/27/2025  
FOR  
CONSTRUCTION  
DESIGNER:  
ENGINEER:

SHEET NO.  
  
AD-100  
OF

